

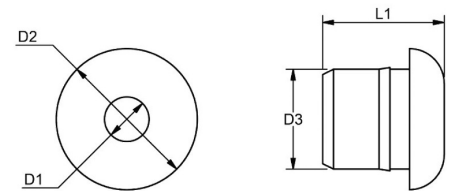
Blue Wave WDS Balustrade Wire Relief



WDS balustrade wire relief.

Split bushing for push or glue in.

Black or Nylon.



Part	D1 mm	D2 mm	D3 mm	L1 mm	Hole Size mm
BW-A6504	4.2	13.0	9.2	11.2	9
BW-A6505	5.7	14.0	10.2	13.1	10
BW-A6506	6.4	14.0	10.2	13.1	10
BW-A6508	8.4	15.6	12.8	13.1	13