

Wichard Stainless Steel Fixed Round Pad Eye



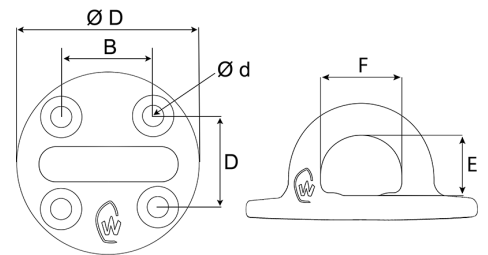
Stainless Steel Fixed Round Pad Eye

- Outstanding mechanical resistance
- High corrosion resistance
- Fitting M6 screws
- Material: Duplex stainless steel grade

Applications:

Multi-use, reefing blocks, fastening point on bowsprit, fastening point for blocks

NB: Loads are applicable to a straight 90° pull from the base.



Part	ØD mm	B mm	D mm	Ød mm	E mm	F mm	Work Load Kg	Break Load Kg
WD-6635	57	27	30	M6	19	22	2300	4500
WD-6637	76	33	40	M10	26	35	4280	10070
WD-6638	95	44	48	M12	26	42	5250	12260