

Anchor swivels range

Wichard anchor swivels are designed to simplify mooring operations, especially when hoisting the anchor. Their unique design ensures that the anchor automatically aligns itself correctly in the bow roller, even if it comes up in the wrong orientation.

Description

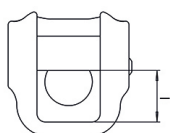
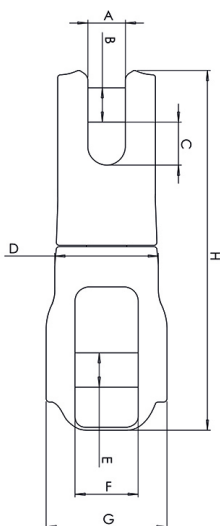
- Comprehensive range - for mooring chains from 6 to 14 mm (1/4" - 9/16")
- Self-aligning to bow roller
- Optimized dimensions
- Compatible with most anchors on the market
- Quality stainless steel construction for strength and corrosion resistance
- Unique design
- Material: 316L stainless steel grade



Applications

- Safer and easier anchoring
- Secure connection between anchor and chain
- Suitable on sailing boats (multihulls, monohulls) and power boats.

Part #	Ø chain mm	A (mm)	B (mm)	C (mm)	D (mm)	E (mm)	F (mm)	G (mm)	H (mm)	I (mm)	W.L (Kg)	B.L (Kg)	Weight (gr)
2975	6 & 8	9	8	15	28	9	16	35	100	13	1100	3000	400
2976	8 & 10 & 12	13	10	15	36	12	22	42	125	18	2050	5000	690
2977	12 & 14	17	16	24	52	16	30	60	173	21	3500	9500	2465



Anchor swivel video